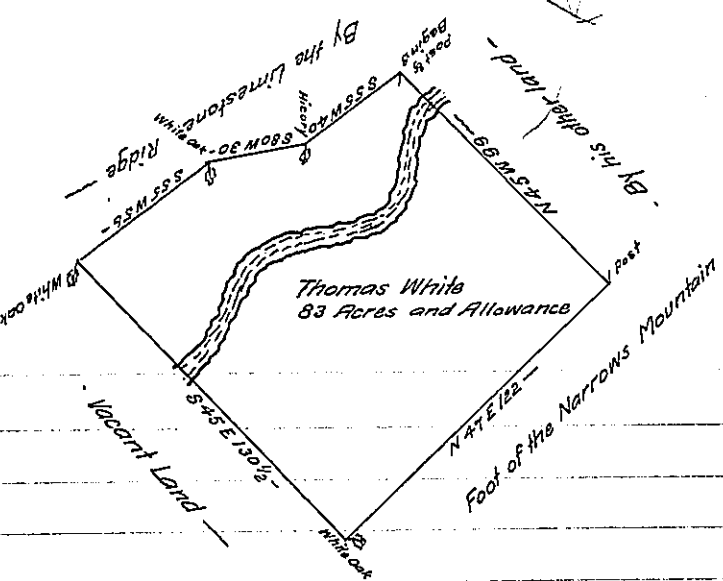


The Draught of a Tract of Land situate at the Forks of Jacks Creek In the County of Cumberland containing One hundred seventeen acres and an Half Acre with the usual Allowance of Six Acres $\frac{1}{2}$ Cent: for Roads &c: Survey'd For Thomas White the 30th of August AD 1765 In Pursuance of a Warrant from the Hon^{ble}. the Proprietaries Bearing Date at Philad:^a the 10th Day of June AD 1762 -

To John Lukens Esq^r Surv^r Gen!
of the Province of Pennsylvania

W^m Maclay Dept^y Surv^r



The Draught of a Tract of Land situate on Jacks Creek In the County of Cumberland containing Eighty Three Acres and an Allowance Proportionate to Six Acres $\frac{1}{2}$ Cent: for Roads &c: Survey'd for Thomas White the 31st Day of August AD 1765- In Pursuance of a Warrant from the Hon^{ble} the Proprietaries Bearing Date at Philad:^a the 10th Day of June AD 1762 -

To John Lukens Esq^r Surv^r Gen!
of the Province of Pennsylvania

W^m Maclay Dept^y Surv^r

IN TESTIMONY that the above is a copy of the original remaining on file in the Department of Internal Affairs of Pennsylvania, made conformably to an Act of Assembly approved the 16th day of February, 1833, I have hereunto set my Hand and caused the Seal of said Department to be affixed at Harrisburg, this thirteenth day of March 1908.

Henry Howell
Secretary of Internal Affairs.